

Welcome to QPS Missouri!

Hello, and welcome to QPS Missouri.

My name is Veronica Montemayor. I am the Client and Project Services Coordinator for our site. That just means that I will be your personal liaison while you are here on site. On behalf of the entire team here at QPS Missouri, I would like to take this opportunity to thank you for choosing us to conduct your clinical research. We are honored to be a part of this collaboration, and we look forward to a long and successful relationship.

I have been with QPS Missouri for 7 years and lived in this area for 23 years, so I can say with confidence, that that I know my way around the area and QPS Missouri. Leading up to, and during your visit, I would be happy to assist you with any questions you might have, or find the right person to assist you. I will work with the clinical team to coordinate any visits, ensuring you have the materials and personnel needed available to you, ensuring your visit is well-organized and productive.

To provide a little background information, QPS Missouri was founded in 1994. Since opening our doors, we have strived to maintain a professional presence within the community while providing a small-town feeling for our participants. That said, don't be fooled by our "mom and pop shop" atmosphere. We just want our sponsors and our participants to feel comfortable and welcomed at our facility, and we do our best to help make that happen.

QPS Missouri is one of the largest CROs in the US, with 240 beds at the site and global capabilities available. Our work ethic is only surpassed by our performance and results. We take great care in ensuring our reputation with our sponsors and our participants.

Throughout this booklet, you will also find general information about the site, the staff and the area. There are even suggestions for hotels, dining and even area attractions. So please, continue flipping through the pages and get to know us. We look forward to meeting you in person!

Sincerely,



Veronica Montemayor
QPS Client and Project Services



About QPS Missouri

QPS Missouri is a Clinical Research Organization (CRO) that conducts studies on behalf of pharmaceutical and biotech companies for the development of new and existing pharmaceutical products. All medications must be carefully evaluated in independent testing laboratories, such as QPS, prior to approval by the Food and Drug Administration (FDA).

Since opening our doors in 1994, QPS Missouri has helped the people of Springfield, Missouri and across the country take part in clinical research studies. We are an accredited member of the Better Business Bureau (A+ report grade) and a member of the Springfield Area Chamber of Commerce.

Located in Springfield, Missouri, we have been conducting clinical trials for more than 27 years, with more than 50,000 participants in our database. Our 5-acre secure campus houses five independent clinics, a pharmacy with retention area, multiple labs and more than 240 beds.

Recommended Dining

4 By 4 Brewing Co.
2811 E. Galloway St.
Springfield, Mssouri

Big Whiskey's
1550 E. Battlefield Rd.
Springfield, Mssouri

Galloway Station
1281 E. Republic Rd.
Springfield, Mssouri

Kai After Dark **
306 S. Campbell Ave.
Springfield, Mssouri

417 Taphouse
431 S. Jefferson Ave.
Springfield, Mssouri

Black Sheep **
209 E Walnut St.
Springfield, Mssouri

Gilardi's Ristorante **
820 E. Walnut St.
Springfield, Mssouri

Maria's
406 South Ave.
Springfield, Mssouri

Arris' Pizza **
2804 E. Battlefield Rd.
Springfield, Mssouri

Cellar & Plate
2916 S. Lone Pine
Springfield, Mssouri

The Grotto
301 Battlefield Rd.
Springfield, Mssouri

Nakato's
2615 S. Glenstone Ave.
Springfield, Mssouri

Avanzare **
1908 S Glenstone Ave.
Springfield, Mssouri
(417) 567-3463

**Char Steakhouse &
Oyster Bar ****
1620 E Republic Rd.
Springfield, Mssouri

**Haruno and the New
Next Door Lounge**
3044 S. Fremont Ave.
Springfield, Mssouri

Nonna's
306 South Ave.
Springfield, Mssouri

**Aviary Cafe **
Farmers Park**
2144 E. Republic Rd.
Springfield, Mssouri

Dublin's Pass
317 Park Central East
Springfield, Mssouri

Hemingway's
1935 S. Campbell Ave.
Springfield, Mssouri

The Order **
305 E Walnut St.
Springfield, Mssouri

Aviary Cafe **
400 E. Walnut St.
Springfield, Mssouri

Farmers Gastropub
2620 S Glenstone Ave.
Springfield, Mssouri

Hinode
4301 S. National Ave.
Springfield, Mssouri

Pappo's Pizzeria
221 E Walnut St.
Springfield, Mssouri

Bambino's Cafe
1141 E Delmar St.
Springfield, Mssouri

Fire & Ice Restaurant
2546 N. Glenstone Ave.
Springfield, Mssouri

Houlihan's
2431 N Glenstone Ave
Springfield, Mssouri

Riad
400 South Ave.
Springfield, Mssouri

Big Whiskey's
311 Park Central East
Springfield, Mssouri

Flame Steakhouse **
314 W Walnut St.
Springfield, Mssouri

Jimm's Steakhouse **
1935 S Glenstone Ave.
Springfield, Mssouri

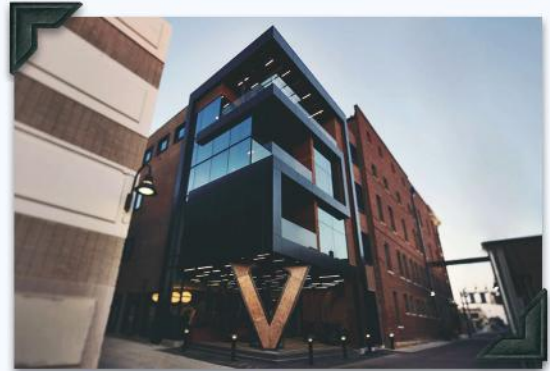
The Rock **
4018 S. Lone Pine Ave.
Springfield, Mssouri

** - denotes that this restaurant is highly recommended
by the staff of the QPS Missouri site.

Recommended Lodging



Anglers Inn by Bass Pro Shops
621 W. Sunshine St. • Springfield, Missouri
(417) 862-0153 • bassproanglersinn.com



Hotel Vandivort & V2
305 E. Walnut St. • Springfield, Missouri
(417) 832-1515 • hotelvandivort.com



Courtyard by Marriott
3527 W. Kearney St. • Springfield, Missouri
(417) 869-6700 • www.marriott.com



Tru by Hilton
517 E Elm St. • Springfield, Missouri
(417) 249-1400



Hilton Garden Inn
4155 S. Nature Center Way • Springfield, Missouri
(417) 875-8800 • www.springfieldmo.hgi.com



ViB - Best Western
1845 E. Sunshine St. • Springfield, Missouri
(417) 881-9100 • www.vibspringfield.com



Meet the Team

At QPS Missouri, our friendly team of trained clinical research professionals is committed to our sponsors, our participants and to our community. You will meet many of them while working with QPS Missouri.

By choosing QPS Missouri, each clinical research study receives individualized service from dedicated professionals including a Principal Investigator, Project Manager and Clinical Research Coordinator, not to mention the many staff behind the scenes ensuring conduct is completed per the protocol. All staff attend ongoing Good Clinical Practices (GCP) trainings and education in an effort to receive up-to-date certifications.

Meet the Team



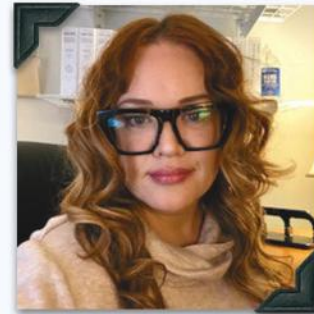
 **Brendon Bourg**
Vice President & General Manager



 **Cristy Glenn**
Director of Clinic Operations



 **Jacob Bentley**
Director of Clinical Trials



 **Emily Buckthorpe**
Director of Compliance



 **Lindsay Palmer**
Director of Recruiting



 **Robin Lee**
Project Manager



 **Niki Powell**
Project Manager



 **Courtney Knapp**
Manager, Data Management
& Quality Control



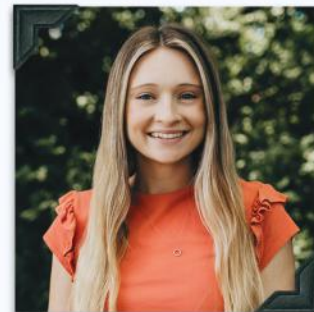
 **Veronica Montemayer**
QA/Regulatory Affairs Coordinator &
Client Services Specialist



 **Sadie Hale**
Manager, Recruiting



 **Crystal Trythall**
Clinical Research Coordinator
Supervisor



 **Amanda Heider**
Clinical Research Coordinator



 **Hailee Marino**
Clinical Research Coordinator



 **Kristyn Gardner**
Clinical Research Coordinator



 **Chandelle Hart**
Pharmacy Technician

Branson Attractions

There is an adventure awaiting everyone in Branson, Missouri. From outdoor fun to amazing live entertainment, there's no shortage of great things to do. Branson's 76 Country Boulevard is famously lined with theaters, which once hosted mostly country music performers, but today present diverse entertainment.

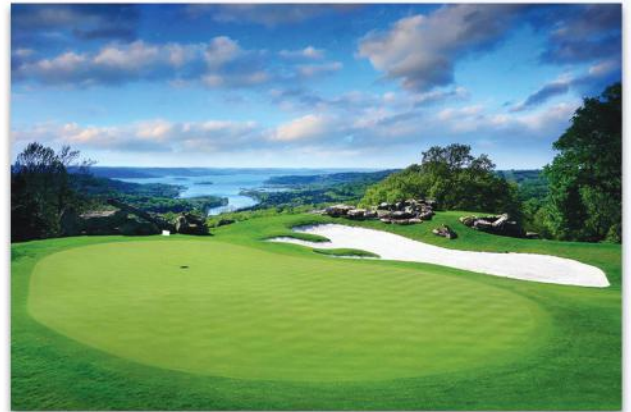


Shows and Live Entertainment

In **Branson**, live shows have been a staple for more than 50 years. Branson offers a variety of entertainment for everyone. From live rock and country music to hilarious comedy shows, amazing acrobats, out-of-this-world shopping, cuisine and an 1800's themed amusement park, there is something for everyone.

Top of the Rock Golf Course

Top of the Rock Golf Course is the first-ever par-3 course to be included in a professional championship, featuring nature and golf at its finest. The experience includes Top of the Rock, a Jack Nicklaus Signature Course, and an Arnold Palmer-designed Practice Facility.



Shows and Live Entertainment

Discover the natural beauty and rustic luxury tucked into the rugged landscape of the Missouri Ozark Mountains. Big Cedar Lodge as a destination for families and friends to connect in the great outdoors.

Local Attractions

Bass Pro Shops Outdoor World

This is the original and largest of the **Bass Pro Shops**. Almost 500,000 square feet dedicated to the beauty of the outdoors. Waterfalls, aquariums, firing range, TRACKER boat showroom, Hemingway's Blue Water Café and more. Shop from a large selection of outdoor gear and visit the National Rifle Association (NRA) Museum and Archery Hall of Fame.



Fantastic Caverns

At **Fantastic Caverns**, you can experience America's Ride-Thru Cave tour. A 55-minute guided tour follows an ancient underground riverbed filled with massive rock formations. The cave stays a comfortable 60° year-round. On your tour, you will learn about the colorful history of the cave and the natural wonders of the Ozarks.

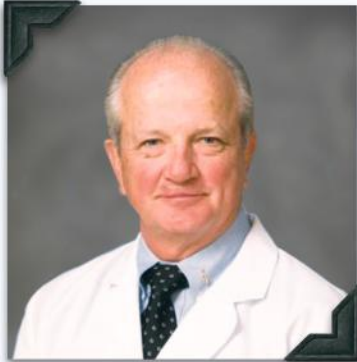
Wonders of Wildlife National Museum & Aquarium

Johnny Morris' Wonders of Wildlife National Museum and Aquarium consists of an all-new 1.5-million-gallon aquarium and showcases 35,000 live fish, mammals, reptiles and birds, and galleries that bring visitors eye-to-eye with the greatest collection of game animals ever assembled. This 350,000-square foot experience celebrates people who hunt, fish, and act as stewards of the land and water.



Meet the Principal Investigators

At QPS Missouri, our Principal Investigator team is made up of local, and highly respected physicians, each with more than 10 years experience of providing medical care and treatment.



Dennis Morrison, D.O.

Lead Principal Investigator



Donald Burkidine, D.O.

Principal Investigator



William Howitt, M.D.

Principal Investigator



Thomas Legg, D.O.

Principal Investigator



Kayce Morton, D.O.

Principal Investigator



Leea Reed, D.O.

Principal Investigator

About Springfield, Missouri

Springfield, Missouri is rooted in the celebration of family, friends and genuine moments. A regional hub with large city amenities and small town hospitality, Springfield commits to creating moments that make life big and full. With intriguing attractions, a diverse culinary scene and a unique shopping experience, Springfield is a destination you will enjoy while feeling right at home.

Economy

In the Springfield Region, companies experience a low cost of doing business which enables them to grow and thrive with ease. Low corporate income taxes support companies who call the region home, and Springfield specifically, ranks among the top 50 cities in the United States for cost of doing business.

These corporate offices, and many others, continue to expand and succeed in the Springfield Region by utilizing the region's friendly business climate and tapping into the region's 316,000 person labor force.

Corporate Headquarters located in Springfield Missouri

<u>Company Name</u>	<u>Industry</u>	<u># of Employees Company Wide</u>
Assemblies of God	Religion	708
Bass Pro Shops	Retail/Manufacturing	21,264
BKD, LLP	Financial	2,250
CoxHealth	Health Care	12,100
Great Southern Bank	Financial	1,115
Jack Henry & Associates	Financial	5,905
Mercy	Health Care	46,000
O'Reilly Auto Parts	Retail/Manufacturing	53,468
Paul Mueller Company	Manufacturing	682
Prime, Inc.	Transportation	4,391
Springfield Remanufacturing Corp. (SRC)	Manufacturing	1,500

About Springfield, Missouri

Education

You could call Springfield a college town, but the truth is education is the cornerstone of the community at all levels. More than 24,000 students attend the Springfield R-12 School District, Missouri's largest fully accredited school system. At a collegiate level, Missouri State University and its more than 24,000 enrolled students call Springfield home, as do the students of Drury University, Ozarks Technical Community College and Evangel University.

Other colleges in Springfield include: Baptist Bible College, Assemblies of God Theological Seminary, and Cox College (Nursing and Allied Health). Branch campuses in Springfield include Mercy College of Nursing and Health Sciences of Southwest Baptist University, Columbia College and Webster University.

Sports

Springfield plays host to college teams from Missouri State University (NCAA Division I), Drury University (NCAA Division II), and Evangel University (NAIA). JQH Arena (capacity 11,000) opened in 2008 and is home to the Missouri State Bears and Lady Bears basketball teams, and the O'Reilly Family Event Center, which opened in 2010, is now home to the Drury Panthers men's and women's basketball teams.

The Springfield Cardinals, the Double-A affiliate of the St. Louis Cardinals, have played at Hammons Field in downtown Springfield since their inaugural season in 2005. A successful team, there have been 100 Springfield Cardinals go on to debut in St. Louis.

The PGA sponsored Price Cutter Charity Championship is played at Highland Springs Country Club on the southeast side of Springfield every year. The event is sponsored by Dr Pepper. Since the event started in 1990, more than \$14 million has been raised for local children's charities.

About Springfield, Missouri

Health Care

Springfield is a regional medical hub with the healthcare field employing more than 30,000 people in the area. Major care providers include CoxHealth, Mercy, Ozarks Community Hospital and Jordan Valley Community Health Center. The city's healthcare systems offer every specialty listed by the American Medical Association.



CoxHealth is one of our two top 100 health care systems. It includes five hospitals and a network of specialty and urgent care facilities and clinics in Southwest Missouri and Northwest Arkansas. CoxHealth continues to expand its capacity through a number of projects, including the completion of The Meyer Orthopedic Hospital, the area's first dedicated orthopedic hospital. CoxHealth also built a Children's Miracle Network hospital for highly specialized pediatric care.



Mercy Hospital is our second top 100 health system. This not-for-profit hospital ranks in America's top 10 for patient safety. It is a Level I Emergency Trauma Center and burn unit. Recently, Mercy opened its own orthopedic hospital, and it runs a dedicated pediatric cancer center. The center is one of six St. Jude Children's Hospital affiliates in the nation.



Both Springfield and Greene County have received World Health Organization Safe Community and International Safe Community designations for efforts to prevent injuries and protect public health. Our cutting-edge care and widespread focus on wellness make Springfield a smart place to call home.

About Springfield, Missouri

Things to Do

The true nature of Springfield, is rooted in the genuine desire to celebrate life's simple pleasures. From the natural beauty of the Ozarks to the vibrancy of a metropolitan city, Springfield is filled with memorable attractions. In Springfield, no matter what the season, there is always something to do.

Arts, Entertainment & Locally Owned Attractions.

Enjoy the numerous festivals, concerts, plays and musicals in venues that are owned and operated by the people who live in Springfield.

Nightlife

The nightlife scene has something for everyone. Enjoy everything from small, intimate venues to first class restaurants.

Parks & Trails

Enjoy the Ozarks in one of our many parks, trails, rivers or streams. Enjoying the outdoors has never been easier.

Route 66

Get your kicks by visiting the various historical locations along the Mother Road.

Breweries, Distilleries & Wineries

Treat yourself by exploring Springfield's diverse wineries, micro-breweries and distilleries.

Health & Wellness

Take a break from the daily grind. Springfield has what you need to relax and indulge your mind, body and spirit.
