

A FLEXIBLE APPROACH TO FLOW CYTOMETRY

QPS IS A GLOBAL, FULL SERVICE CRO THAT COMBINES OUR STRONG BIOMARKER, pharmacogenomics, and cell based assay development capabilities with flow cytometry expertise. Flow cytometry is one of the leading-edge technologies with a broad application allowing for the simultaneous detection of various targets on various cell subsets at a single cell level with relatively high throughput.





FLOW CYTOMETRY APPLICATIONS AND TECHNIQUES

Flow Cytometry Services

QPS is committed to high quality service and customer satisfaction by ensuring timely and compliant custom-built clinical research services.

- ▶ Flow cytometry assay transfer from any status
- ▶ Off-the-shelf flow cytometry assay from commercially available kits
- ▶ Flow cytometry panel development and optimization
- ▶ Flow cytometry fit-for-purpose validation
- ▶ Flow cytometry clinical sample analysis
- ▶ Additional analytical platform: ELISpot

Applications

- ▶ Immunophenotyping (Up to 45 marker High Dimensional Flow Cytometry Panel)
- ▶ Cellular Immunogenicity (Cytokines and Activation-Induced Markers)
- ▶ Receptor Occupancy (RO) to Measure Levels of Drug-Target Binding
- ▶ Absolute Counts for Required Populations
- ▶ Measurable Residual Disease (MRD) Assessment
- ▶ Human Anti-Chimeric Antibody (HACA) Assessment
- ▶ Cellular Kinetics for Cell Therapy
- ▶ Quantitative Flow Cytometry Assay
- ▶ Functional Assay (for example, Phosphorflow and Proliferation)

Platforms

- ▶ Cytex Aurora (5 Laser)
- ▶ Integra Mini 96
- ▶ Integra Assist Plus
- ▶ Cellaca MX
- ▶ Agilent BioTek Cytation 7
- ▶ BD FACSCanto™ II (3 Laser)
- ▶ Miltenyi MACSQUANT 10 (3 Laser)
- ▶ Data Analysis Platform (FlowJo)
- ▶ Cloud-based Data Analysis Platform (OMIQ)



CELLULAR IMMUNE RESPONSES

Flow Cytometry

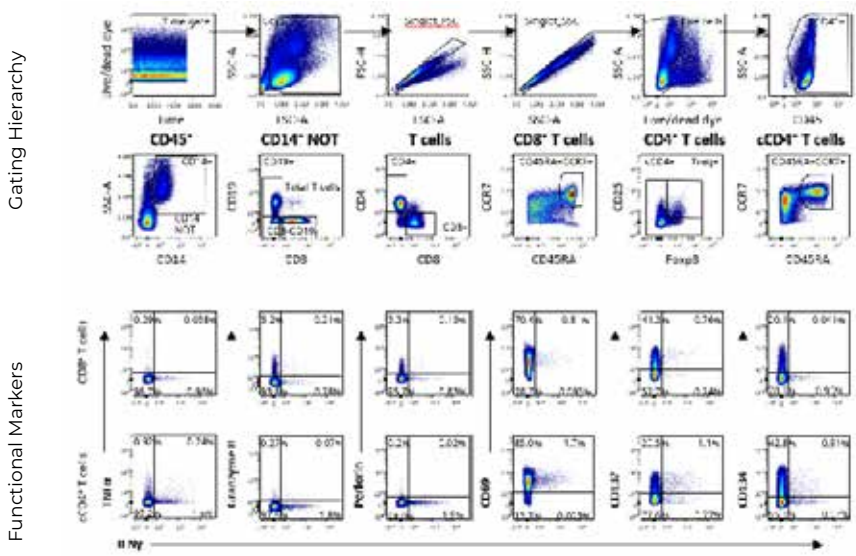


Figure Legend: Healthy donor PBMCs were stimulated with CytoStim overnight in the presence of monensin. Data generated from 40-color high dimensional flow cytometry panel.

IFN γ ELISpot

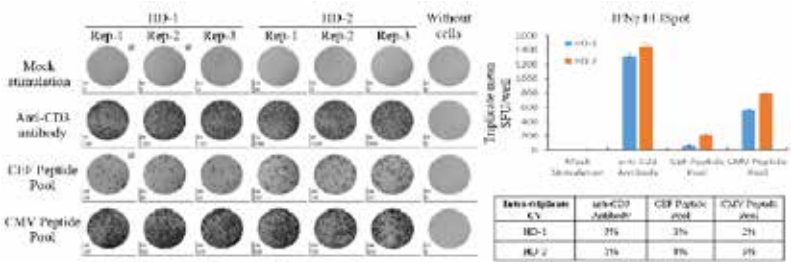


Figure Legend: Healthy donor PBMCs were stimulated with indicated stimulators with 2e5 cells/well for 24 hours. Cellca MX cell counter was used to count cells. SFU/well was counted with Mabtech IRIS.

CONTACT THE QPS BUSINESS DEVELOPMENT TEAM TODAY!

Website: www.qps.com | Email: infobd@qps.com

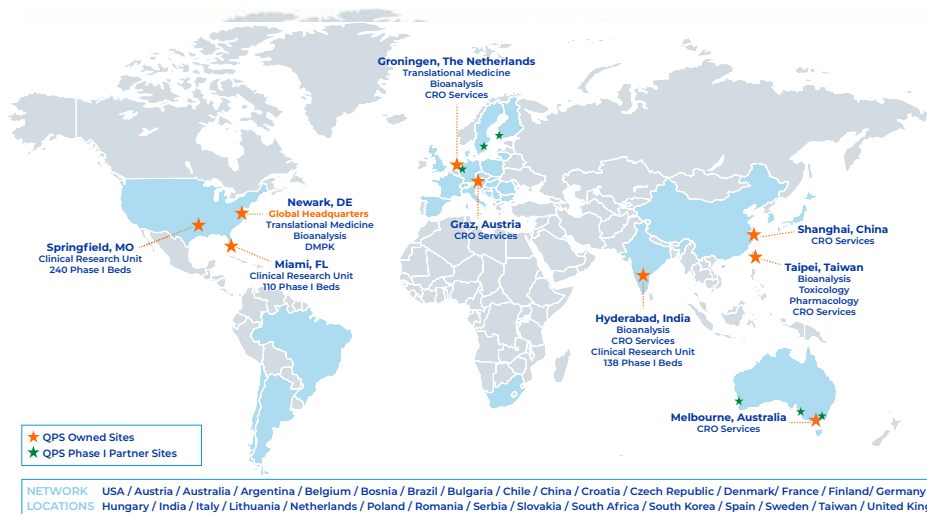


QPS IS A GLOBAL CRO WITH LOCATIONS AROUND THE WORLD

BENEFIT FROM THE RESOURCES OF A GLOBAL CRO



Whether your focus is small molecules, protein biotherapeutics, vaccines, gene therapy or cell therapy, QPS provides a full range of bioanalytical services to support drug development needs from discovery, through clinical development and regulatory filing.



CUSTOM-BUILT RESEARCH™

TIME IS OF THE ESSENCE IN DRUG DEVELOPMENT.
CONTACT THE QPS BUSINESS DEVELOPMENT TEAM TODAY!

Website: www.qps.com | Email: infobd@qps.com